

Fig1

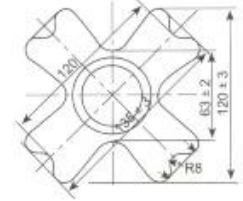
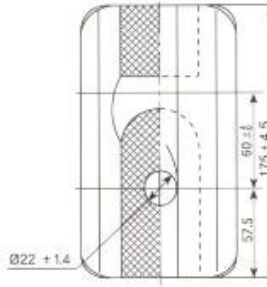
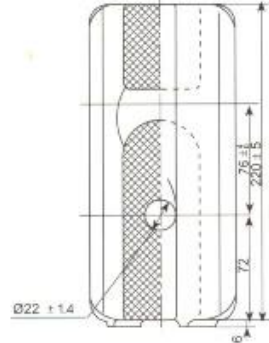
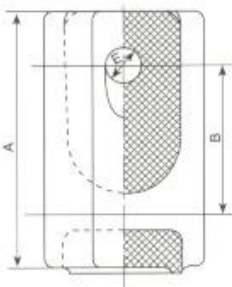
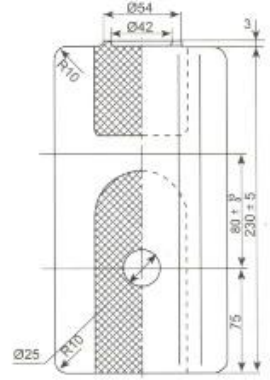
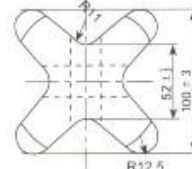
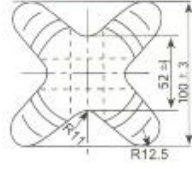
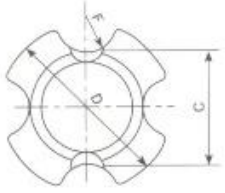


Fig2

X24

H24

11-3257G

ANA DÜZENLEMELER VE STANDART ÖZELLİKLER

Şek.	tip	Ana boyutlar (Mm)						Kaçak mesafesi (Mm)	Mekanik arıza yüklemesi (KN)	Güç frekansı flashover voltajı (KV)		Ağırlık (kilogram)
		bir	B	C	D	E	F			Kuru	Islak	
1	11,1354	78	35	25	44	14		32	18	25	12	2
1	11,1075	95	57	37	50	19		48	45	30	15	4.9
1	11,0522	136	85	60	62	19		63	110	35	18	15.1
1	11,0521	190	85	60	72	25		63	110	40	23	20.6
2	PS10	59	35	25,5	39,5	8	6,5					
2	PS9 / 3	60	26	25,5	38	8	6,5					
2	NEF-2-60	60	28	25,5	38	10	6,5					
2	NEF-2-58	58	24	23	37	8	6					
2	40x55	55	27	22,5	40	12	8					